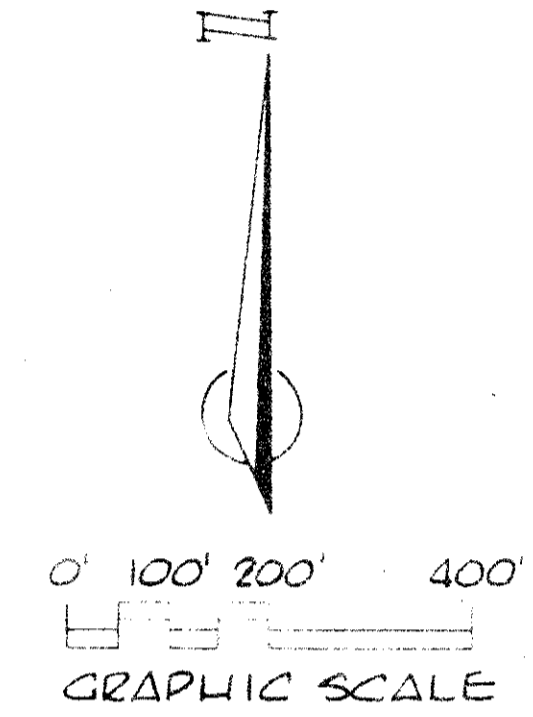
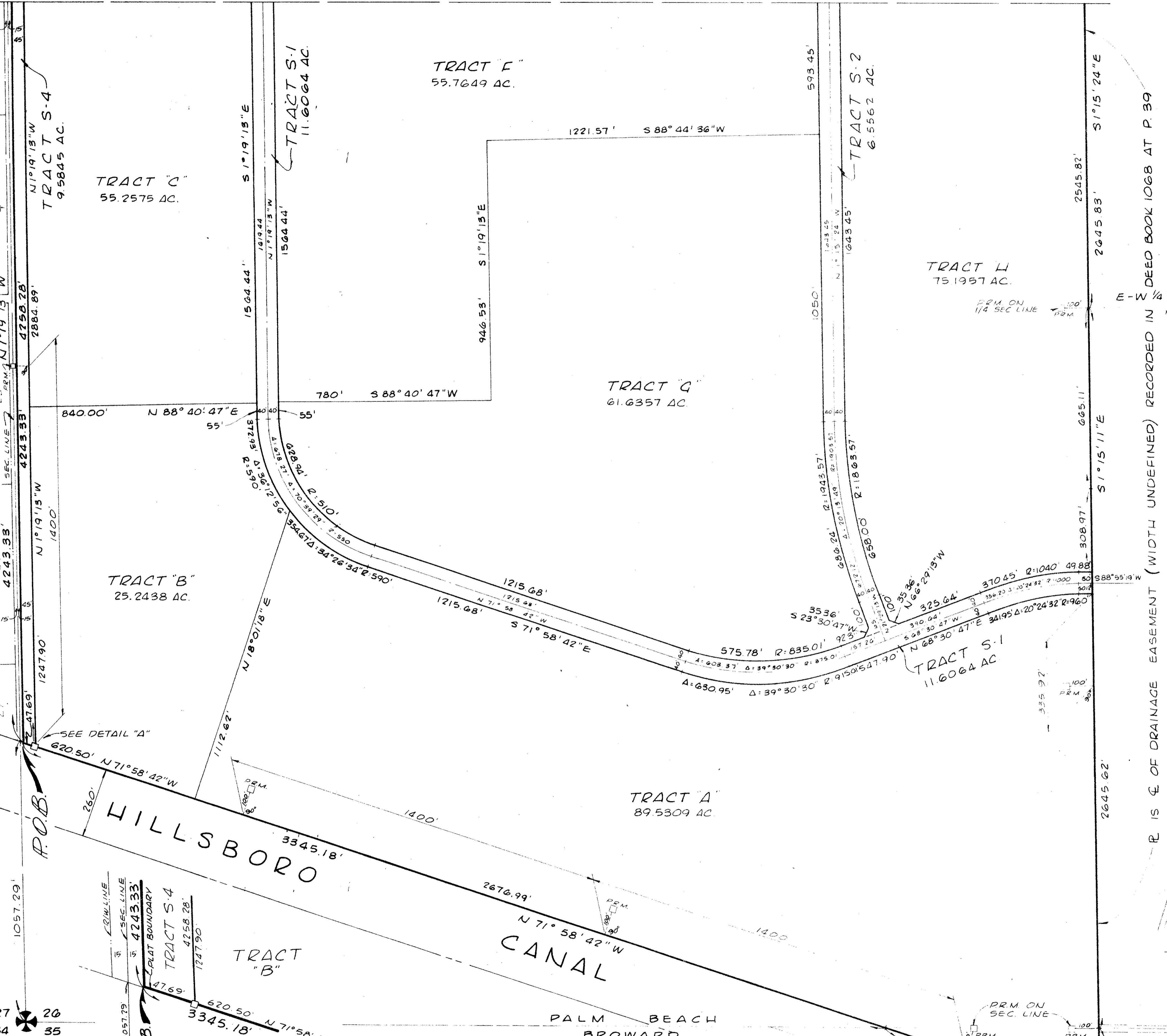


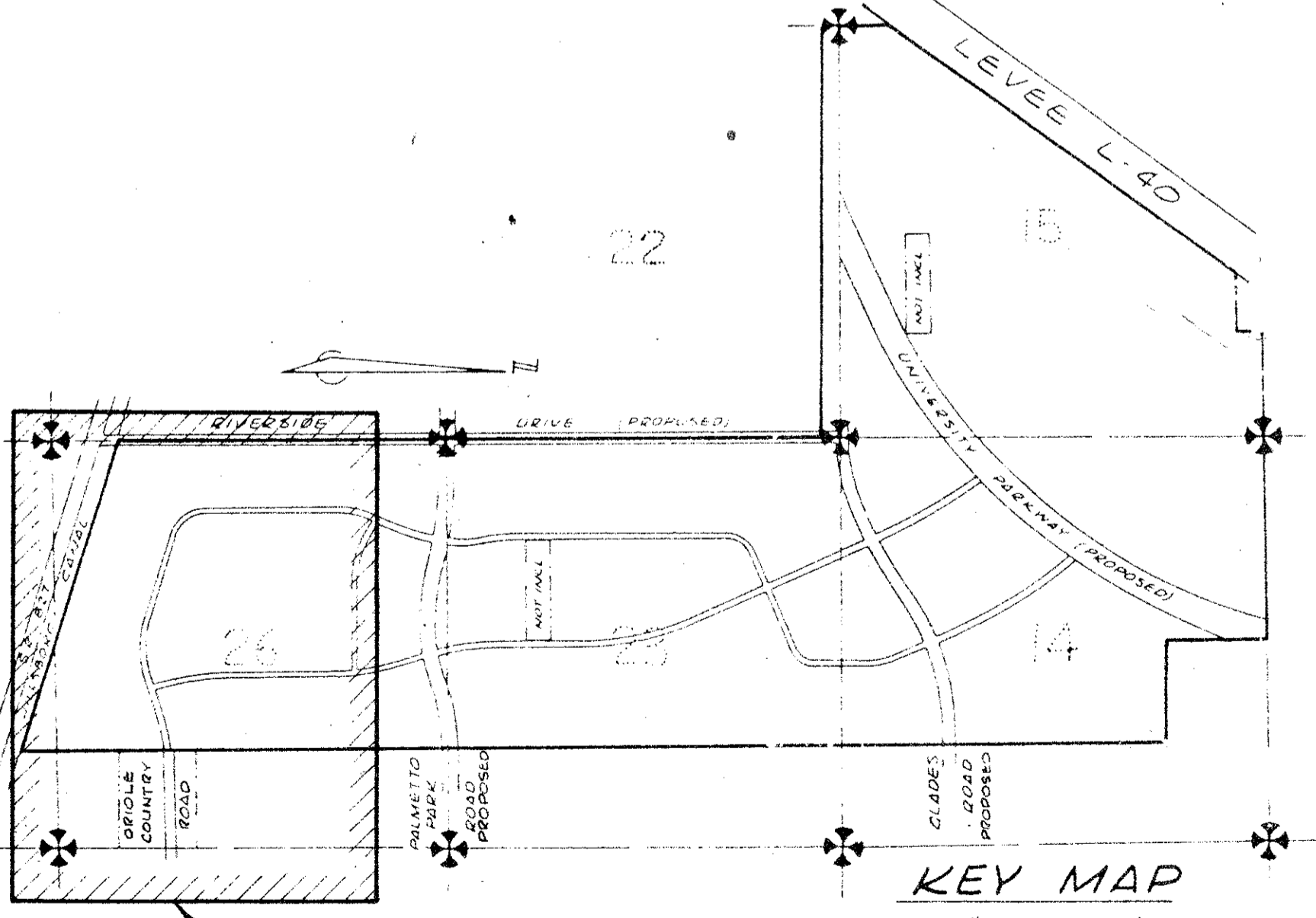
BOUNDARY PLAT OF ORIOLE COUNTRY

176

MATCH LINE - SEE SHEET 3



R IS E OF DRAINAGE EASEMENT (WIDTH UNDEFINED) RECORDED IN DEED BOOK 1068 AT P. 39



ORIOLE COUNTRY

| | | |
|--|---|--|
| Field Book No. C-22 Pg. 46 Design D. WHITE Drawn G. COSS Checked M. J. ... Field H. BLINN | ROBERT E. OWEN & ASSOCIATES, INC. ENGINEERS · PLANNERS · SURVEYORS WEST PALM BEACH, FLORIDA | <h2 style="margin: 0;">BOUNDARY PLAT OF ORIOLE COUNTRY</h2> |
| <p style="font-size: 24pt; font-weight: bold; margin: 0;">14, 15, 22, 23, 26, 33, 41, 42</p> | | <div style="font-size: 48pt; font-weight: bold; margin: 0;">32/176</div> |
| SH of 6 File No. BF-2250 | | |